

5. HEADER for PUMY-P-YHMA, VHMA

R410A Data G4

Piping for CITY MULTI™ can be easily done with Joints and Headers provided by MITSUBISHI ELECTRIC CORP.. There are 2 sets of Headers selectable for piping. Details for applying the Header sets are referable to System Design 3, or their own Installation Manual.

CMY-Y64-G-E

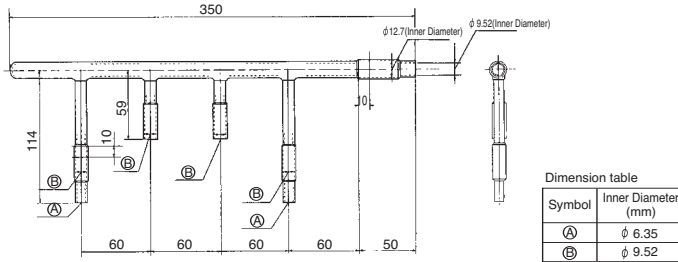
Ref.: 7FAGFB
mm

1. Specification

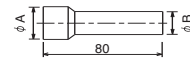
	Items	Details
Main	Number of ports	3 ~ 4 ports
	Number of branch joints	One for each liquid and gas pipe
	Pipe material	Phosphorus deoxidized copper C1220T-OL (JIS H3300)
Accessory	Insulation material	Foamed polyethylene
	Reducer	7 reducers of 5 types
	Cap	2 caps of 2 different types for each liquid and gas pipe 4 caps in total

2. External drawing

For liquid pipe:

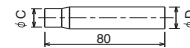
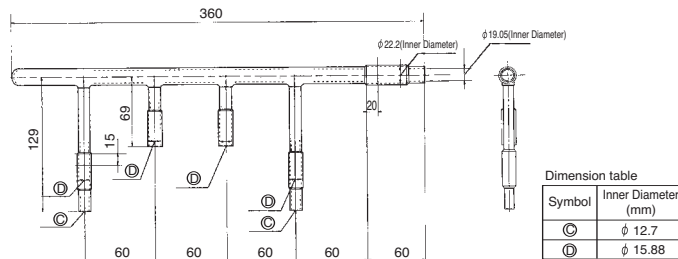


Reducer (Accessory):



A (Inner Diameter)	B (Outer Diameter)	Number of reducers
$\phi 19.05$	$\phi 15.88$	1
$\phi 15.88$	$\phi 12.7$	2
$\phi 9.52$	$\phi 6.35$	2

For gas pipe:



C (Inner Diameter)	D (Outer Diameter)	Number of reducers
$\phi 15.88$	$\phi 19.05$	1
$\phi 9.52$	$\phi 12.7$	1

CMY-Y68-G-E

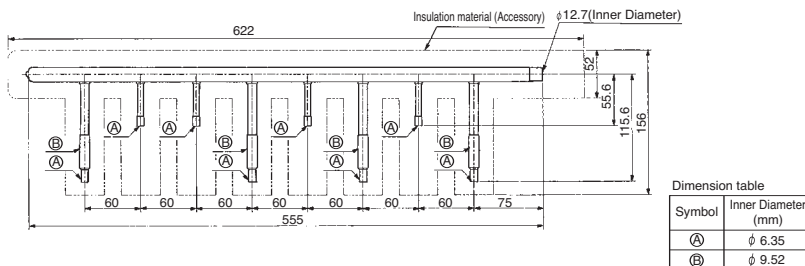
Ref.: 7FAGFC
mm

1. Specification

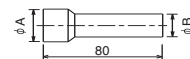
	Items	Details
Main	Number of ports	5 ~ 8 ports
	Number of branch joints	One for each liquid and gas pipe
	Pipe material	Phosphorus deoxidized copper C1220T-OL (JIS H3300)
Accessory	Insulation material	Foamed polyethylene
	Reducer	3 reducers of 3 types
	Cap	3 caps for each liquid and gas pipe 6 in total

2. External drawing

For liquid pipe:

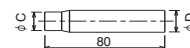
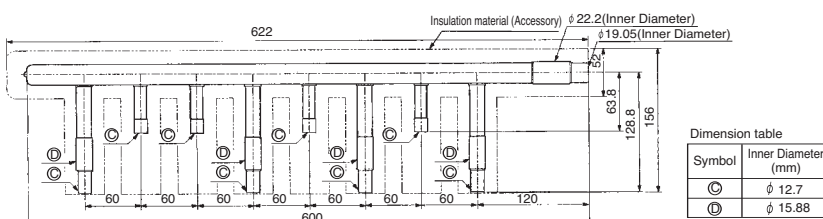


Reducer (Accessory):



A (Inner Diameter)	B (Outer Diameter)	Number of reducers
$\phi 19.05$	$\phi 15.88$	1
$\phi 12.7$	$\phi 9.52$	1

For gas pipe:



C (Inner Diameter)	D (Outer Diameter)	Number of reducers
$\phi 15.88$	$\phi 19.05$	1